



# BLUE · TOPAZ

BY OSSEUS

## **BONE PURCHASE**

Aggressive distal cutting flutes and double helix threads allow for effortless bone purchase and screw insertion without pre-tapping.

## **OSSEOINTEGRATION**

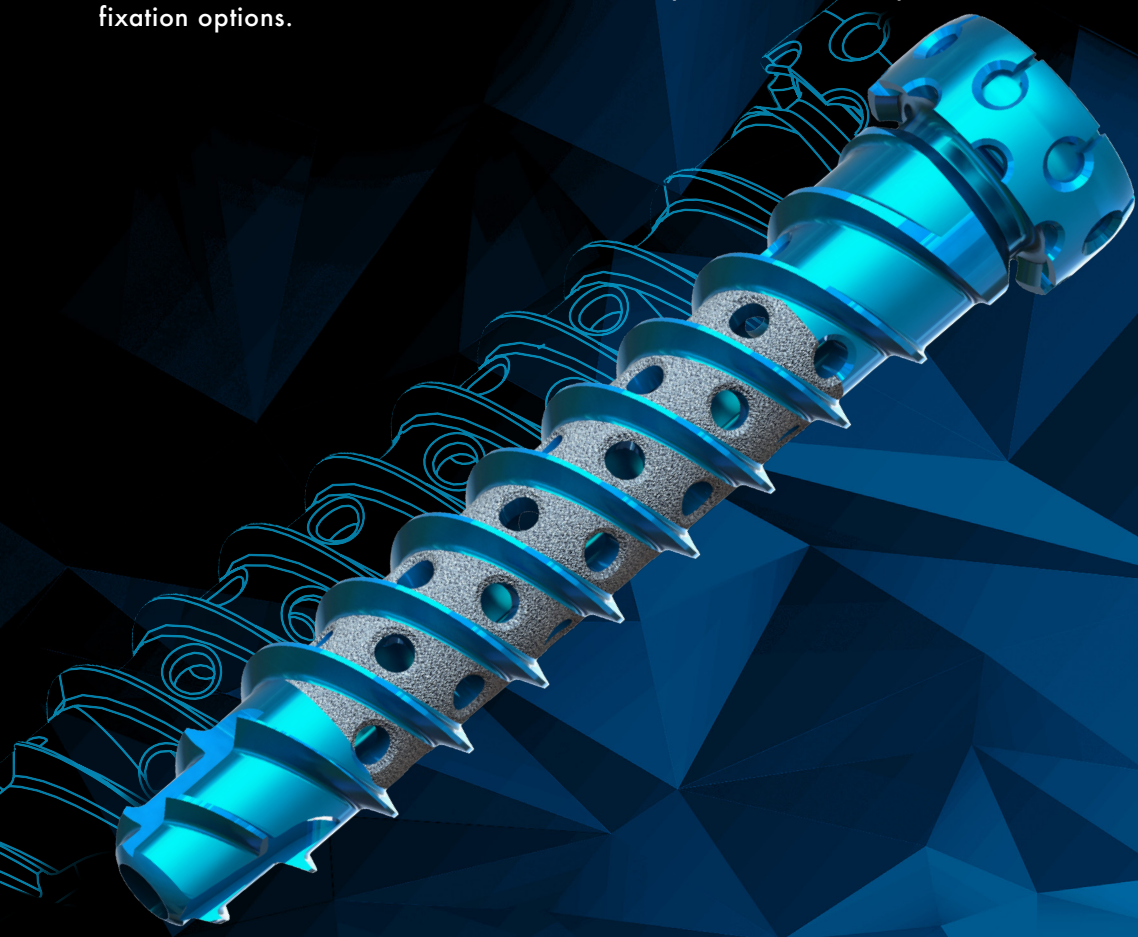
Proprietary surface treatment and open architecture promote bone growth onto, into, and throughout the device.

## **FIXATION**

Wide range of screw diameters and lengths offer an array of fixation options.

## **COMPRESSION**

Optional lag caps facilitate compression across SI joint.



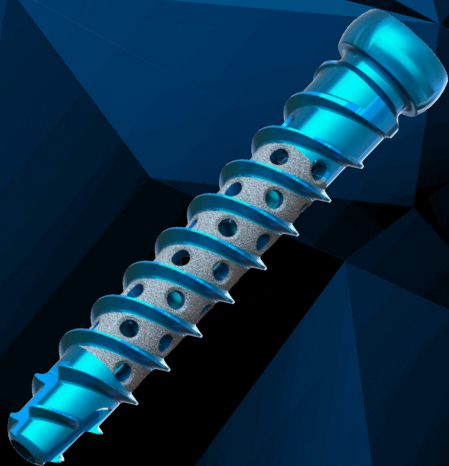
The Blue Topaz Sacroiliac Screw System consists of fenestrated, double helix threaded screws with aggressive distal cutting flutes facilitating effortless bone purchase and screw insertion. The implant's proprietary surface treatment and open architecture promote bone growth onto, into, and throughout the device. The screws come in a wide range of diameters and lengths offering an array of fixation options while attachable lag caps allow for compression across the SI joint.

## TECHNICAL SPECIFICATIONS

---

### BLUE TOPAZ SCREWS

---



#### DIAMETERS

Ø 8.5mm

Ø10.5mm

Ø12.5mm

#### LENGTHS

30mm 60mm

35mm 65mm

40mm 70mm

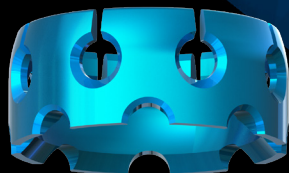
45mm 75mm

50mm 80mm

55mm

### BLUE TOPAZ LAG CAPS

---



#### SIZES

Standard

Large